

A photograph of a forest path covered in bluebells. The path is lined with tall, thin trees and a large mossy tree trunk on the left. The ground is covered in a dense carpet of purple bluebells with green leaves. The scene is bright and natural.

Boturnell Farm Cottages

Dog friendly cottages in Cornwall

Self-catering Accommodation

St Pinnock, Liskeard, Cornwall

www.dogs-holiday.co.uk

About Us



Boturnell Farm is reputed to have been mentioned in the Domesday Book. There certainly was a priest called Simon de Boturnell in the thirteenth century. There has been some modernisation since his time! The farm is set in 25 acres, all of which is accessible to our visitors.

St Pinnock is a small village in the Cornish countryside. It is said to have been a refuge for rebel soldiers in the time of the Civil War. It is situated near the historic market town of Liskeard to the east and the ancient Stannary town of Lostwithiel on the river Fowey to the West. Larger towns, such as St Austell and Plymouth are not more than 30 minutes away. We are approximately 7 miles from Looe and Polperro. Near also is the famous harbour of Charlestown, with its shipwreck museum and the ships used in many period dramas including "A Respectable Trade" and "Frenchmans Creek".

The Cottages



Chy Yar

Chy Yar offers bright and airy accommodation using new and upcycled materials and furniture. This 3 bedroom property is truly unique.

sleeps: 6 persons



The Chestnuts

The Chestnuts is a fantastic ground floor barn conversion located in Galmpton, a little village on the outskirts of Paignton and Brixham.

sleeps: 6 persons



The Shepherd Hut

Originally used by shepherds at lambing time, this hut has recently been refurbished. It has futon style sofa which opens out into a bed and the place is heated by a log burner stove which you also has an oven and hot

sleeps: 2 persons



Beau Tunnel

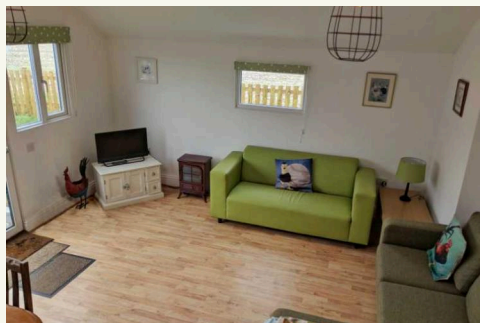
Fancy staying somewhere completely different? Beau Tunnel is a converted Nissan Hut, with many quirky features.

sleeps: 4 persons

Chy Yar



Chy Yar is Cornish for chicken house and until recently this was the home to our flock. They have now moved to a new apartment, guarded by our alpacas. Converted from a nissen hut, Chy Yar offers bright and airy accommodation using new and upcycled materials and furniture. This 3 bedroom property is truly unique. There is an open plan living/dining area with terrific views over the neighbouring fields. The kitchen is fitted with a full size oven and hob, microwave, washer/dryer and under counter fridge with ice box. Bedroom one has a king-size bed with en-suite bathroom, with bath. Bedroom two has a double bed and bedroom three has a single with pull out guest bed underneath. There is also a family shower rom. At the front and to the side is a full enclosed garden, with patio. The property is accessible up a few steps onto a veranda.



The Chestnuts



The Chestnuts is a fantastic ground floor barn conversion located in Galmpton, a little village on the outskirts of Paignton and Brixham. This barn has a total of 3 bedrooms and can sleep up to 6 guests. It is in very close proximity to the local village shop and Inn and a number of wonderful educational walks as well as the world famous Greenway House, the family home of Agatha Christie now run by the National Trust. The cottage itself occupies a very large corner plot within a select residential development of similar conversions on the edge of the village. The Chestnuts' own private rear gardens are a delight and provide a very large space for guests to relax. The accommodation is spacious and modern and is ideal for a family or couples travelling together looking for a holiday base conveniently located to explore all the attractions that South Devon offer.



The Shepherds Hut



Originally used by shepherds at lambing time, this hut has recently been refurbished. It has futon style sofa which opens out into a bed and the place is heated by a log burner stove which you also has an oven and hot plate so you can cook the old fashioned way! A nearby shower room is available for your use and is literally two minutes away. There is an electric point, so you can use the flat screen TV with integral DVD player. Wi-Fi is available on the farm, but may not reach you here. It has its own enclosed garden, with chimenea and stunning views over the valley and woods. Linen is provided. Pets are welcome free of charge, but do bear in mind it is 6ft x 11ft 4", so you will be cosy! We don't mind, if you don't.



Beau Tunnel



Fancy staying somewhere completely different? Beau Tunnel is a converted Nissan Hut, with many quirky features.

It has been described as staying in a gypsy caravan only much bigger! There is a fully fitted kitchen, with fridge, freezer, dishwasher, microwave and Belfast sink.

There are 2 bedrooms, a double and a single, but with a captain's bed, so it can sleep 2. The lounge area has a log-burning stove and TV with integral DVD player.

The bathroom has a corner bath, with a hand held shower. There is an enclosed garden with super views over the fields.



The Animals



As you can see from the menagerie at Boturnell Farm, we are animal crazy!

Many of the pets here are rescue and we appreciate that many owners like to bring their pets on holiday. This is fine by us. Throws are provided to protect the furniture and help you relax. All cottages have enclosed gardens.

Dogs stay free.

Stabling is available for the more larger pets and more adventurous owners. Hay can be provided and there are many super rides around.

At the farm, we have pygmy goats, all of whom have a story to tell! They share their life and often their breakfast with some of the chickens and ducks that wander around. There are the guinea fowl, cats, degus, chipmunks and horses around. We also have guinea pigs and a rabbit. Our own dogs (1 from Pet Rescue) stay in our house and garden.

Activities

Boturnell Barns are set in the beautiful Cornish countryside, allowing easy access to all parts of the county and Devon. There are many places of great interest, beautiful beaches and breathtaking moorland together with picturesque ancient fishing harbours all within a short distance. These are just a few of the facilities available. More information is available in each cottage.

Riding: Bodmin Moor Family

Entertainment: Quad Centre, Menheniot, Bodmin Steam Railway, Porfell Farm and Animal Land.

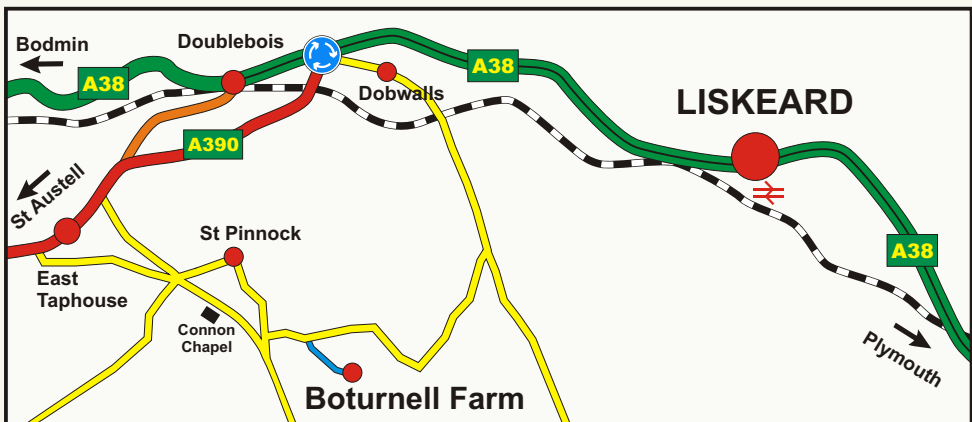
Place of Historic Interest: Lanhydrock House, Antony House, Carnglaze Caverns and Jamaica Inn.

Golf: St Mellion, well known to all serious golfers! Lostwithiel and Doublebois.

Sailing: Siblyback Water Park, plus coastal waters.

Fishing: Colliford Lake Park & Shillamill Lakes and also sea fishing from Looe for shark etc.

Of course, Cornwall is well known for surfing, body boarding and diving.



How to find us

Proprietor: Sue Jewell

**BOTURNELL FARM COTTAGES, ST PINNOCK,
LISKEARD, CORNWALL PL14 4QS**

01579 320880

website: www.dogs-holiday.co.uk

e-mail sue@dogs-holiday.co.uk



Boturnell Farm Cottages

www.dogs-holiday.co.uk